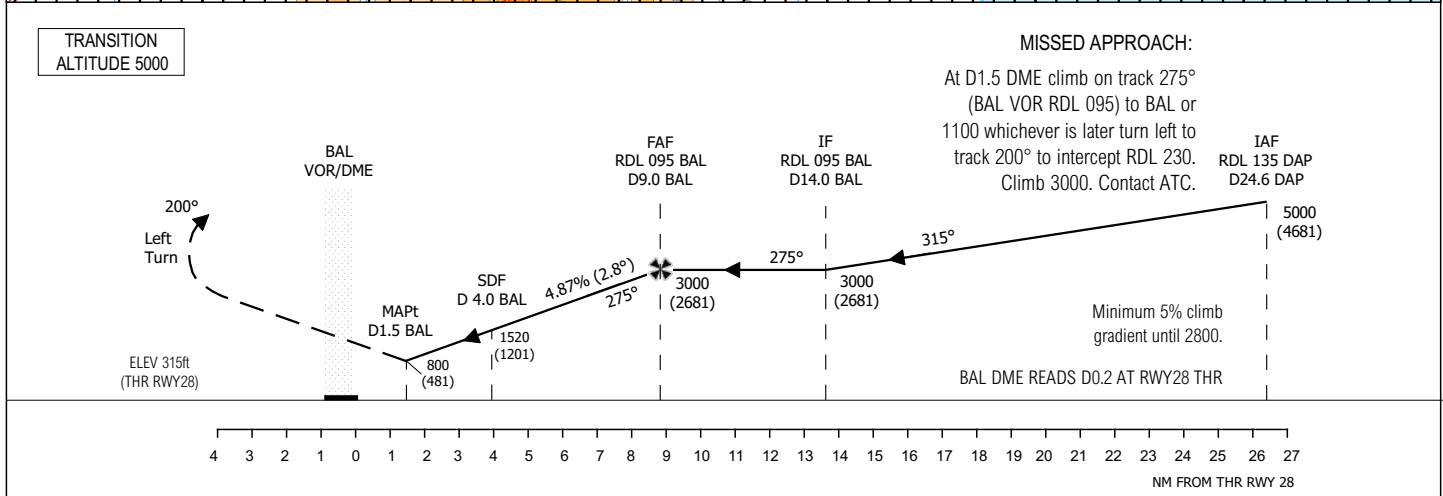
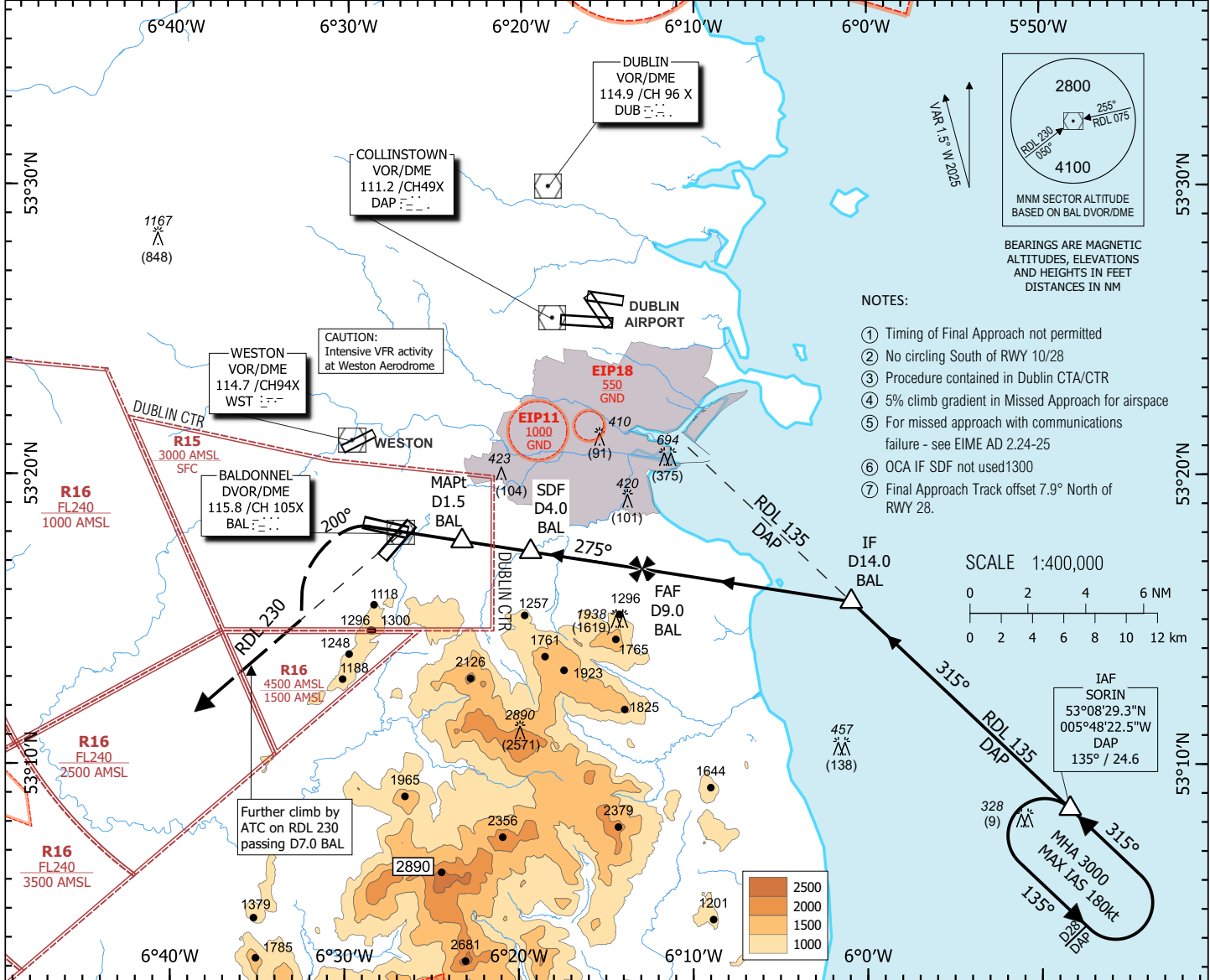


INSTRUMENT APPROACH CHART - ICAO **AERODROME ELEV 319 ft** TWR 123.500
 HEIGHTS RELATED TO AERODROME ELEVATION BAL RADAR 122.000
 ATIS 122.805
 DUBLIN LOWER SOUTH 120.755
 DUBLIN LOWER NORTH 132.580

BALDONNEL/CASEMENT (MIL)
VOR/DME RWY 28 ①②③④⑤⑥⑦
 (ACFT CAT A, B, C, D)



STRAIGHT IN LANDING RWY28	CAT	IDEAL ALTITUDE (HEIGHT) ON FINAL APPROACH				IDEAL ALTITUDE (HEIGHT) ON FINAL APPROACH								
		A	B	C	D	DME (BAL)	9.0	8.0	7.0	6.0	5.0	4.0	3.0	2.0
OCA (H) 800 (481)	CEILING	500	500	500	500	ALT (HT)	3000 (2681)	2700 (2381)	2410 (2091)	2110 (1791)	1820 (1501)	1520 (1201)	1230 (911)	930 (611)
	VIS	2000	2000	2400	2800	GROUND SPEED	kt							
CIRCLE TO LAND (Heights AAL)	ALS OUT	2400	2400	2800	3200	Rate of descent gradient 4.87% (2.8°)	ft/min	296	394	493	591	690	788	887
	OCA (H)	910 (591)	980 (661)	1080 (761)	1080 (761)	REIL RWY LTs								
	CEILING	600	700	800	800	SALS								
	VIS	2000	2000	2800	3600									