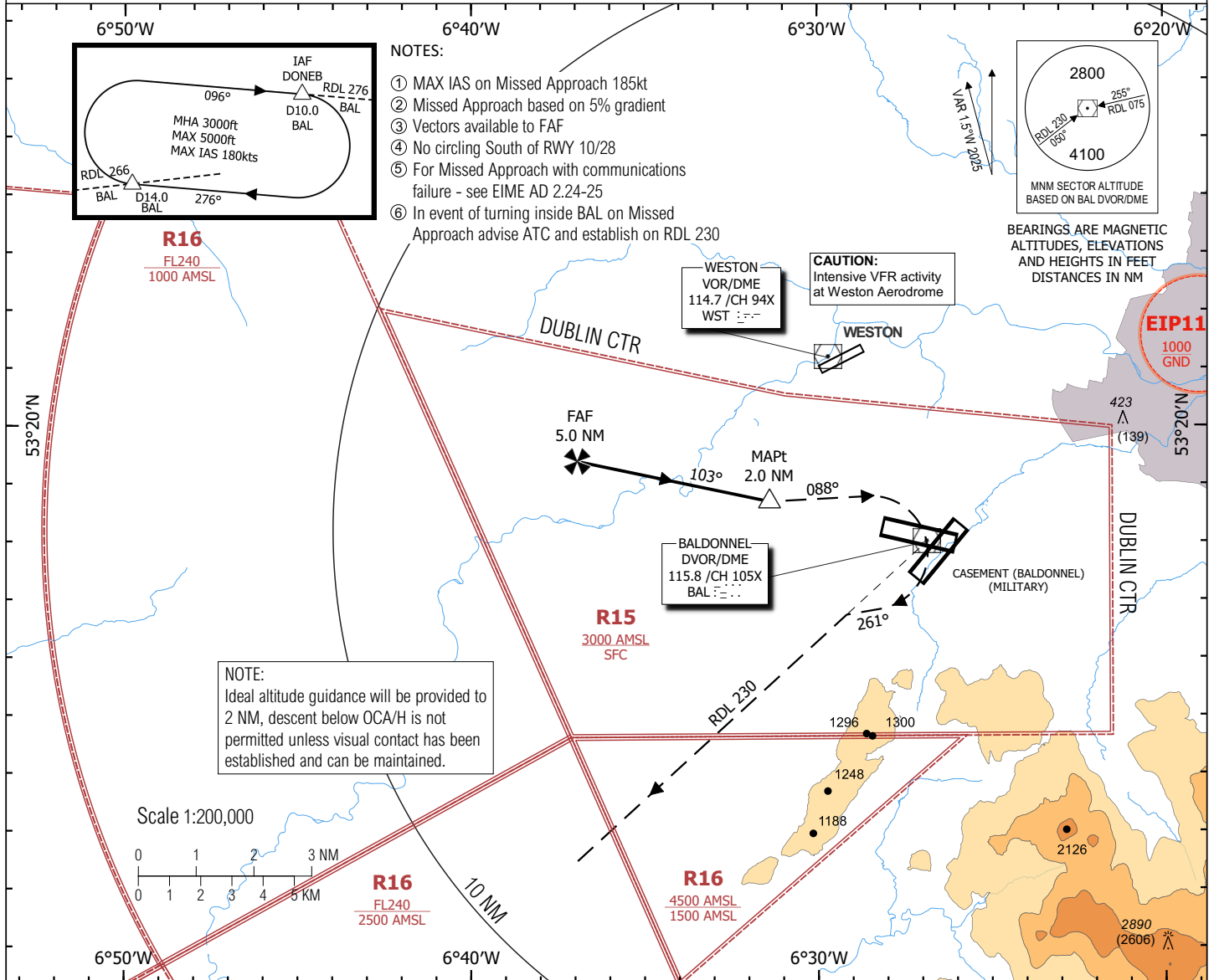


INSTRUMENT
APPROACH
CHART - ICAO

AERODROME ELEV **319 ft**
HEIGHTS RELATED TO
THR RWY 10 - ELEV 284 ft

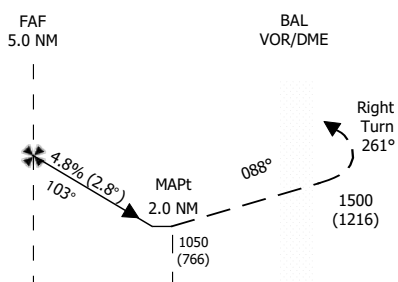
TWR 123.500
BAL 122.000
RADAR 122.805
ATIS 122.805

BALDONNEL/CASEMENT (MIL)
SRA RWY 10 ①②③④⑤⑥
(ACFT CAT A, B, C)



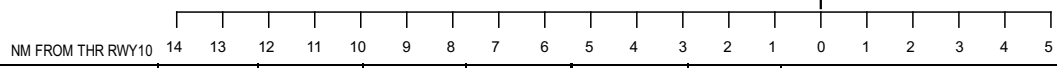
CHANGE: MAGVAR, TRACKS AND RADIALS, OBSTACLES, PROCEDURE NOW COMMENCES AT FAF

TRANSITION
ALTITUDE 5000



MISSED APPROACH:
At 2.0 NM turn left onto track 088°
climb 3000, at 1500 turn right
onto track 261° to intercept
RDL 230 from BAL. Contact ATC
Do not exceed IAS 185kt 3000 Maintain
5% climb gradient until 2800.

ELEV 284ft (THR RWY10)



| | CAT | A | B | C |
|---|---------|------------|-------------|-------------|
| STRAIGHT IN LANDING RWY10 OCA (H) 1050 (766) | CEILING | 800 | 800 | 800 |
| | VIS | 2000 | 2000 | 3600 |
| | ALS OUT | 2400 | 2400 | 4000 |
| CIRCLE TO LAND (Heights AAL) | OCA (H) | 1140 (821) | 1480 (1161) | 1610 (1291) |
| | VIS | 2000 | 2000 | 2800 |
| OCAs based on 2.5% Missed Approach climb gradient | | | | |
| | CAT | A | B | C |
| | OCA (H) | 1130 (846) | 1320 (1036) | 1500 (1216) |

| LIGHTING | IDEAL ALTITUDE (HEIGHT) ON FINAL APPROACH | | | | | | | | |
|------------------------------------|---|----------------|----------------|---------------|--------------|-----|-----|-----|-----|
| | Distance (NM) | 5.0 | 4.0 | 3.0 | 2.0 | | | | |
| PAPI 3° REIL RWY LTs SALS | ALT (HT) | 1800 (1516) | 1510 (1226) | 1210 (926) | 920 (636) | | | | |
| | GROUND SPEED | kt | 60 | 80 | 100 | 120 | 140 | 160 | 180 |
| | Rate of descent gradient 4.8% (2.8°) | ft/min | 293 | 391 | 489 | 586 | 684 | 782 | 880 |

| GROUND SPEED | kt | 60 | 80 | 100 | 120 | 140 | 160 | 180 |
|-----------------------------|--------|-----|-----|-----|-----|-----|-----|-----|
| Rate of climb gradient 2.5% | ft/min | 152 | 203 | 254 | 304 | 355 | 406 | 456 |