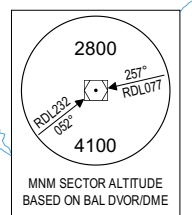


INSTRUMENT APPROACH CHART - ICAO **AERODROME ELEV 319 ft** **HEIGHTS RELATED TO THR RWY 10 - ELEV 283 ft** **BALDONNEL/CASEMENT (MIL)**
ILS γ RWY 10 ① ② ③ ④ ⑤ **(ACFT CAT C, D)**

TWR 123.500
 BAL 122.000
 RADAR 122.805
 ATIS 122.805

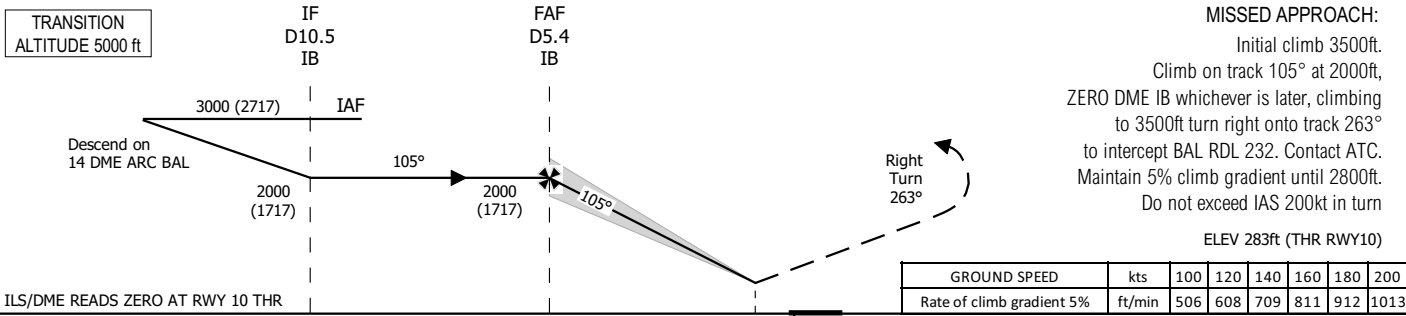
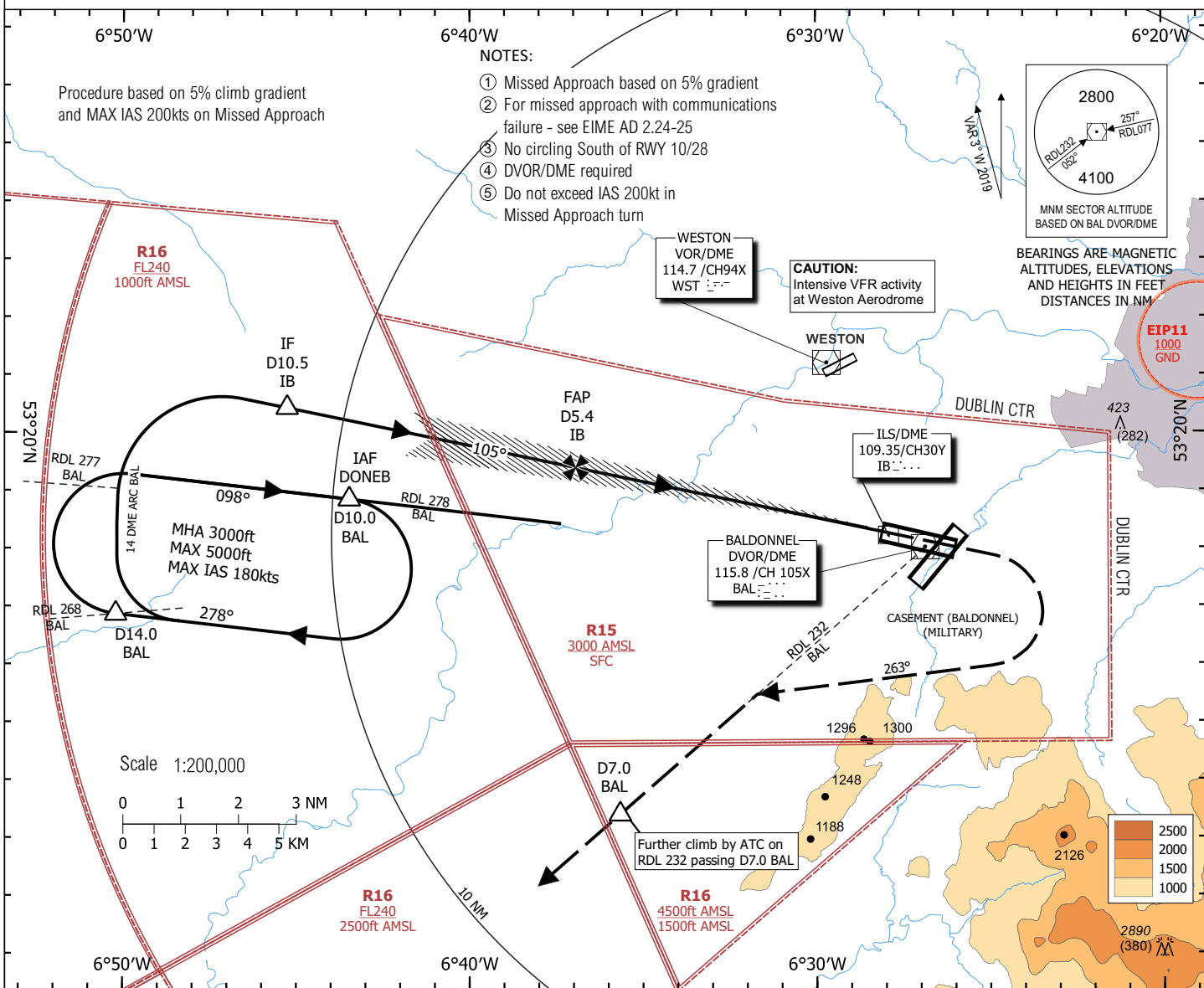
- NOTES:**
- ① Missed Approach based on 5% gradient
 - ② For missed approach with communications failure - see EIME AD 2.24-25
 - ③ No circling South of RWY 10/28
 - ④ DVOR/DME required
 - ⑤ Do not exceed IAS 200kt in Missed Approach turn



CAUTION:
 Intensive VFR activity at Weston Aerodrome

BEARINGS ARE MAGNETIC ALTITUDES, ELEVATIONS AND HEIGHTS IN FEET DISTANCES IN NM

CHANGE: REVISED STRAIGHT IN LANDING AND CIRCLE TO LAND OCA(H) FIGURES, RVR/VIS AND ALS OUT



STRAIGHT IN LANDING RWY 10				
	OCA(H)	CEILING	RVR/VIS	ALS OUT
C	483 (200)	200	750m	1200m
D	493 (210)	300	750m	1200m
OCAs based on 2.5% Missed Approach climb gradient				
C	1350 (1067)	1100	4400m	4900m
D	1360 (1077)	1100	4400m	4900m
CIRCLE TO LAND (heights AAL)				
	OCA(H)	CEILING	RVR/VIS	
C	1000 (681)	700	2400m	
D	1160 (841)	900	3600m	
CIRCLE TO LAND (heights AAL) based on 2.5% Missed Approach climb gradient				
C	1390 (1071)	1100	4900m	
D	1400 (1081)	1100	4900m	

LIGHTING	IDEAL ALTITUDE (HEIGHT) ON FINAL APPROACH									
	NM	5.3	5.0	4.0	3.0	2.0	1.0			
	ALT (HT)	2000 (1717)	1880 (1597)	1560 (1277)	1240 (957)	920 (637)	600 (307)			
PAPI 3° REILS RWY LTS SALS	GROUND SPEED				kts	100	120	140	160	180
	Rate of descent gradient 3°				ft/min	530	636	743	849	955

Rate of climb missed approach 2.5%								
GROUND SPEED		kts	100	120	140	160	180	200
Rate of climb gradient 2.5%		ft/min	254	304	355	406	456	507