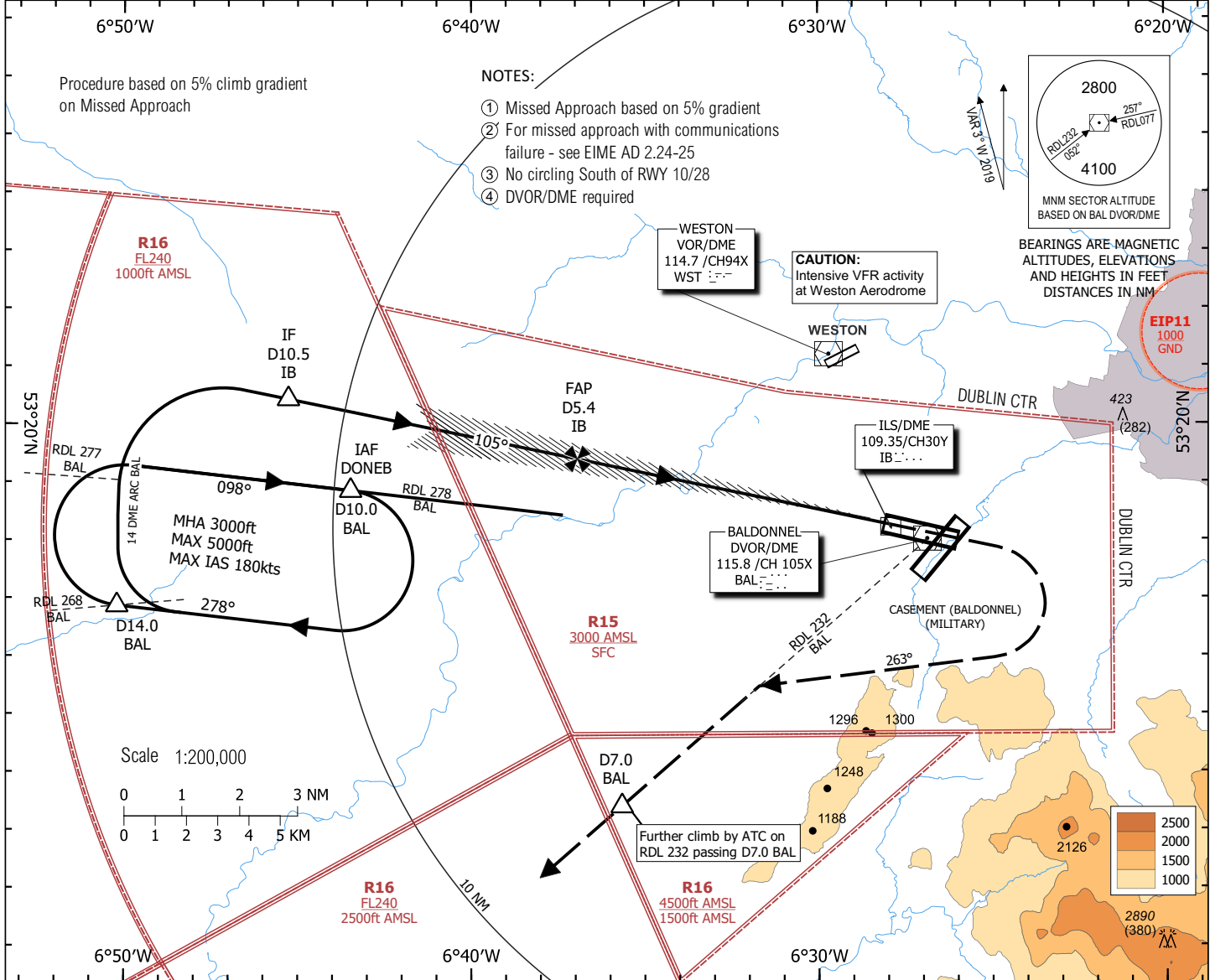


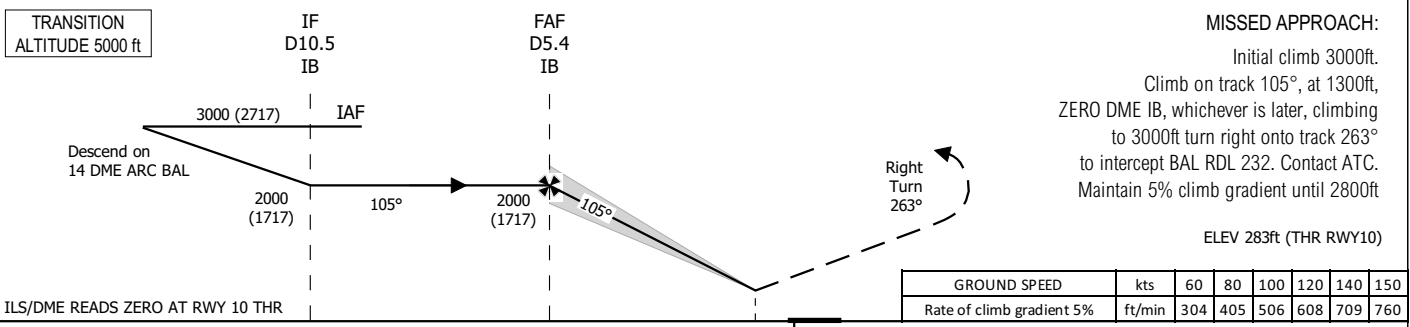
**INSTRUMENT APPROACH CHART - ICAO**      **AERODROME ELEV 319 ft**      **HEIGHTS RELATED TO THR RWY 10 - ELEV 283 ft**

**BALDONNEL/CASEMENT (MIL)**  
**ILS z RWY 10 ①②③④**  
**(ACFT CAT A, B)**

TWR 123.500  
 BAL 122.000  
 RADAR 122.805  
 ATIS 122.805



CHANGE: REVISED STRAIGHT IN LANDING AND CIRCLE TO LAND OCA(H) FIGURES, CEILINGS, RVR/VIS AND ALS OUT



NM FROM THR RWY10																			
14	13	12	11	10	9	8	7	6	5	4	3	2	1	0	1	2	3	4	5
<b>STRAIGHT IN LANDING RWY 10</b>																			
OCA(H)		CEILING	RVR/VIS	ALS OUT															
A	466 (183)	200	750m	1200m															
B	473 (190)	200	750m	1200m															
OCAs based on 2.5% Missed Approach climb gradient																			
A	870 (587)	600	2300m	2700m															
B	960 (677)	700	2700m	3100m															
<b>CIRCLE TO LAND (heights AAL)</b>																			
OCA(H)		CEILING	RVR/VIS																
A	900 (581)	600	1500m																
B	900 (581)	600	1600m																
<b>CIRCLE TO LAND (heights AAL) based on 2.5% Missed Approach climb gradient</b>																			
A	910 (591)	600	2700m																
B	1000 (681)	700	3100m																
<b>LIGHTING</b>																			
PAPI 3° REILS RWY LTS SALS	<b>IDEAL ALTITUDE (HEIGHT) ON FINAL APPROACH</b>																		
	NM	5.3	5.0	4.0	3.0	2.0	1.0												
	ALT (HT)	2000 (1717)	1880 (1597)	1560 (1277)	1240 (957)	920 (637)	600 (307)												
	GROUND SPEED		kts		60	80	100	120	140	150									
Rate of descent gradient 3°		ft/min		318	424	530	636	743	796										
<b>Rate of climb missed approach 2.5%</b>																			
GROUND SPEED		kts		60	80	100	120	140	150										
Rate of climb gradient 2.5%		ft/min		152	203	254	304	355	380										