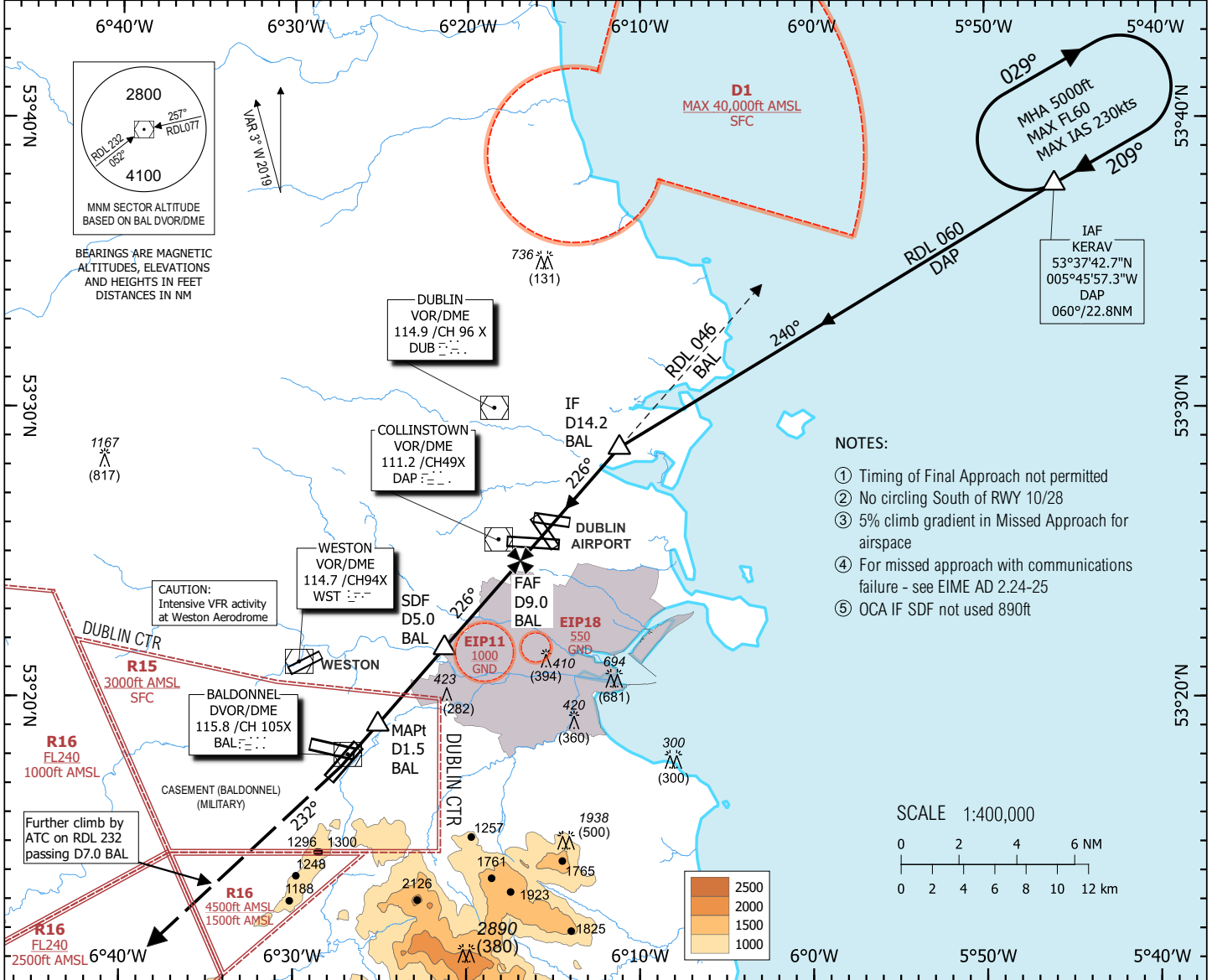
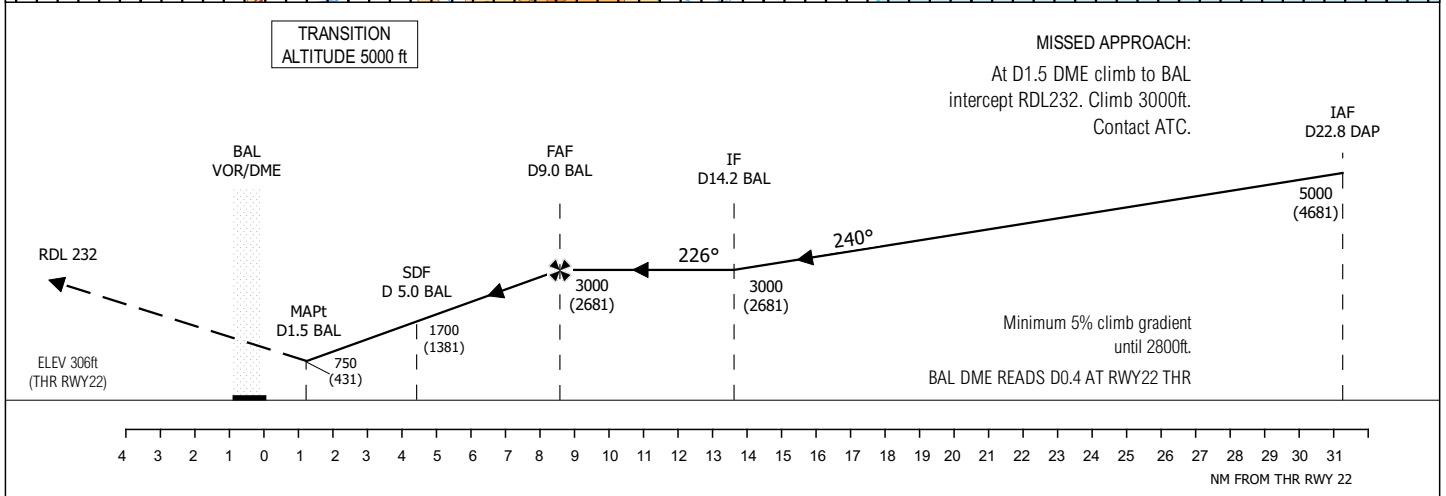


INSTRUMENT APPROACH CHART - ICAO **AERODROME ELEV 319 ft** **HEIGHTS RELATED TO AERODROME ELEVATION** TWR 123.500
 BAL RADAR 122.000
 ATIS 122.805
 DUBLIN LOWER SOUTH 120.755
 DUBLIN LOWER NORTH 132.580

BALDONNEL/CASEMENT (MIL)
VOR/DME RWY 22 ①②③④⑤
 (ACFT CAT A, B, C, D)



CHANGE: REVISED CIRCLE TO LAND OCA(H) FIGURES AND CEILINGS.



STRAIGHT IN LANDING RWY22	CAT	IDEAL ALTITUDE (HEIGHT) ON FINAL APPROACH				IDEAL ALTITUDE (HEIGHT) ON FINAL APPROACH								
		A	B	C	D	DME (BAL)	9.0	8.0	7.0	6.0	5.0	4.0	3.0	2.0
OCA (H) 750 (431)	CEILING	500	500	500	500	ALT (HT)	3000 (2681)	2690 (2371)	2390 (2071)	2090 (1771)	1780 (1461)	1480 (1161)	1180 (861)	870 (551)
	VIS	2000	2000	2400	2800	LIGHTING PAPI 3° REIL RWY LTs SALS	GROUND SPEED				Rate of descent gradient 5%			
ALS OUT	2400	2400	2800	3200	kts				ft/min					
CIRCLE TO LAND (Heights AAL)	OCA (H)	830 (511)	830 (511)	930 (611)	1010 (691)	60				304				
	CEILING	600	600	700	700	80				405				
	VIS	2000	2000	2800	3600	100				506				
						120				608				
						140				709				
						160				810				
						180				911				